

# Broadway Bikeway Design Features

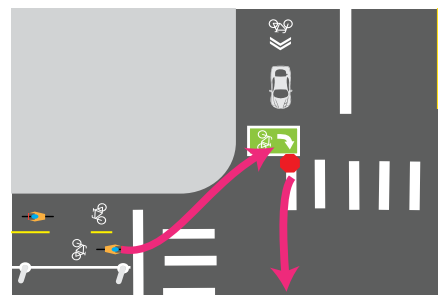
## Bike Signals

Similar to a traffic light for vehicles, bicycle signals tell people on bicycles when it is safe to proceed. Bicycle signals are horizontal and yellow as to be distinguishable from regular traffic signals.



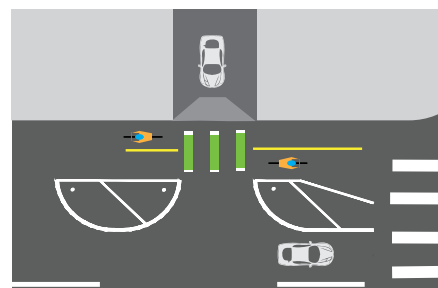
## Turn Queue Box

Turn queue boxes position people on bikes ahead of the crosswalk to make a turn without having to cross multiple lanes of traffic. People on bikes should position in the turn queue box in the intended direction of travel and then proceed through the intersection after the light is green.



## Painted Conflict Zones

Painted conflict zones: Intersections and driveways without traffic signals will have painted green striping to show it is a potential conflict zone between motorists and bicyclists. Everyone must use caution when entering the green paint area.



## Broadway Corridor Study- Phase 2

Phase 2 of The Broadway/Lincoln Corridor Study is a **3 to 15-month effort** designed to test alternative ways to organize Denver streets for increased mobility options. The section of Broadway from **Bayaud Avenue** to **Virginia Avenue** was chosen due to its designation as a high crash corridor for people on bikes and on foot. This section of road is also an area where cars travel faster than the speed-limit. The goal of this study is to determine the impact a protected, two-way bikeway would have on a high-trafficked street with multi-modal activity occurring daily.

A **protected bikeway** is an exclusive bike facility that provides a separated path in the street. A protected bikeway is physically separated from motor vehicle traffic and also distinct from the sidewalk. Protected bikeways have different forms but all share common elements—they provide space that is intended to be exclusively or primarily used by bicycles, and are separated from motor vehicle travel lanes, parking lanes, and sidewalks. In situations where on-street parking is allowed, protected bikeways are located to the curb-side of the parking.

### Give Us Feedback!

Take our survey at [www.denvermovesbroadway.com](http://www.denvermovesbroadway.com) | [denvermovesbroadway@denvergov.org](mailto:denvermovesbroadway@denvergov.org)  
**#Broadway Study**

### FAQ

#### What is the timeline?

The City plans to monitor the project for 15 months. After 3 months of data collection and evaluation, the City will confirm the remainder of the study.

#### Can I walk across the bikeway?

Yes, you may walk across the bikeway to access your parked vehicle or when crossing the street at a crosswalk. Remember to look both ways when crossing the bikeway and yield to on-coming bicyclists. Please use the sidewalk when walking parallel to Broadway. Walking and jogging within the bikeway for recreational purposes is not allowed.

#### What happens at intersections and driveways?

At signalized intersections, all roadway users will follow the signals. At all unsignalized intersections, motorists must yield to bicyclists and pedestrians. Bicyclists must also yield to pedestrians. Everyone should use caution and show respect while on the road.

#### How should bicyclists turn across Broadway?

There are two ways to turn across Broadway from the bikeway. One way is called a two-stage turn: stop at the stop line at an intersection and wait for the light at the cross street to turn green. The other way is to get out of the bikeway in advance of the intersection and merge over to the right side when it is safe to do so. More information can be found on the back.

#### Is the Broadway Protected Bikeway one-way or two-way?

Two-way. Bicyclists will be able to ride in both directions within the bikeway.

#### Why is green paint used?

Green paint is used at all driveways and intersections to signify an area where a higher degree of caution is necessary. It shows where motorists can cross the bikeway. Both bicyclists and motorists entering this area must exercise caution. Green is the color that has been approved by the U.S. Department of Transportation Federal Highway Administration for use in bikeways.